



# Next-Gen Image Enhancement Technology



**ContextVision**

SEE MORE. KNOW MORE.

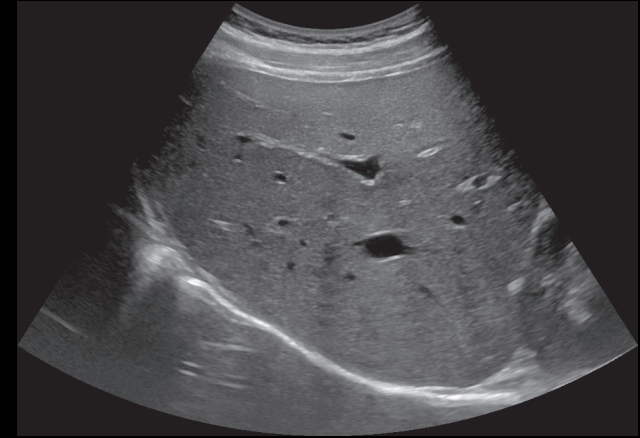
# See More. Know More.

Every innovation and external collaboration at ContextVision is dedicated to elevating clinical clarity, diagnostic confidence, and workflow efficiency. Our Next-Gen technology delivers superior performance on those technical image attributes that matter most in ultrasound imaging. Our new offering renders ultrasound images with increased fidelity, further enabling an even higher diagnostic confidence for clinicians.

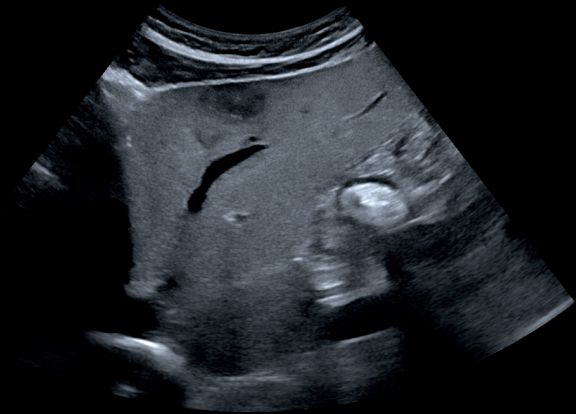
**Optimization of contrast and gray scale resolution** makes even small differences in echogenicity visible.

**Concise edge definition** provides an improved visualization of delineation of anatomical structures.

**Optimization of sharpness, connectivity and contrast** provides an improved visualization of the fine-structure (echo texture) of tissues.



Ultrasound image of a liver. The parenchyma is homogenous with normal echogenicity. The liver surface is smooth and soft, a key sign of a healthy liver.



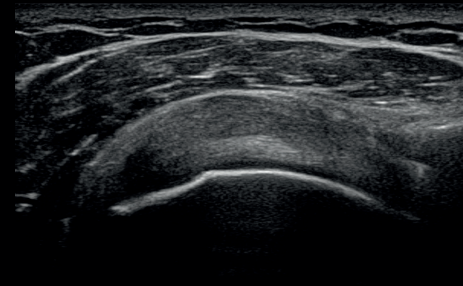
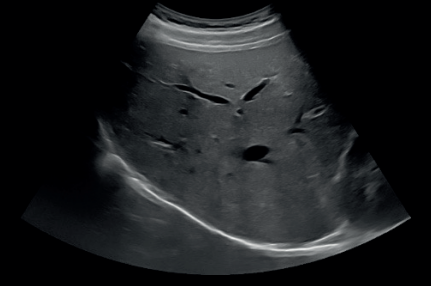
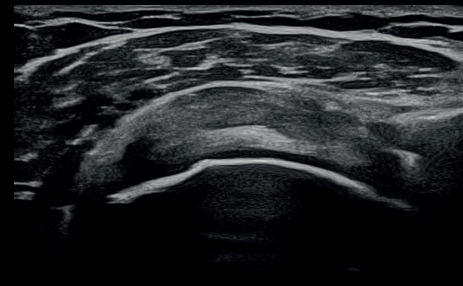
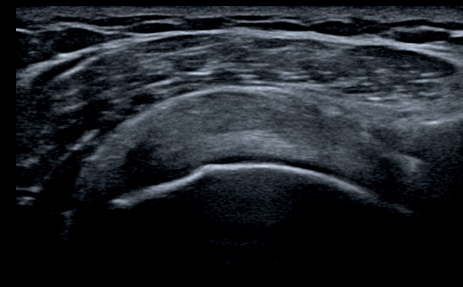
Ultrasound image of a hyperechoic liver indicating steatosis. The parenchyma is homogenous with a well-defined slightly hypoechoic focal change – a focal nodular hyperplasia. The liver surface is smooth without nodularity.



# The Power of **Customization**

ContextVision technology is engineered to master every key technical attribute of ultrasound imaging, but, more importantly, our solutions can be customized to create a wide spectrum of visual looks tailored to specific clinical needs, user preferences, and brand identity.

Professional Services support partners closely, working with medical device manufacturers to tailor our technology for every system tier — from premium CART systems to portable and handheld devices — for quick integration of market and clinician feedback ensuring faster clinical adoption.

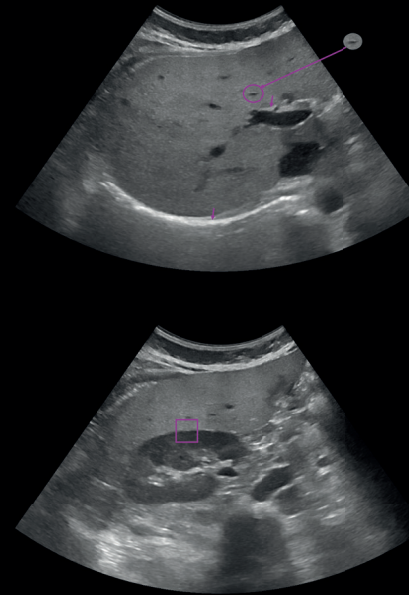


Three different ultrasound looks, each customized to different imaging device manufacturers' preferences. Diagnostic detail is preserved across all. Left column: Shoulder. Right column: Liver.

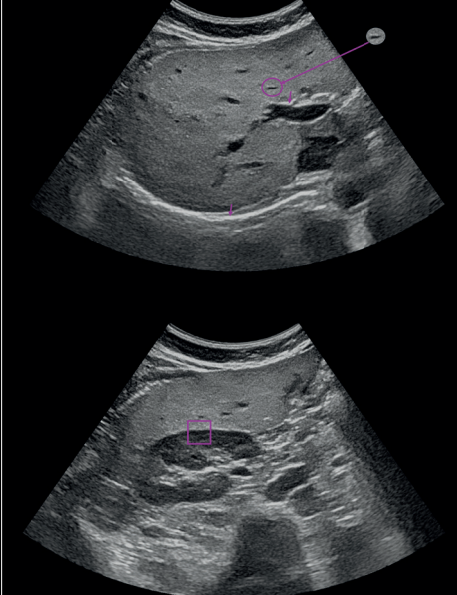
# Introducing Our **Disease-Specific** Product Portfolio

Clinicians know best. ContextVision collaborates closely with both seasoned and emerging radiologists and sonographers to address their needs with meaningful technological advantages. Our Next-Gen technology delivers disease viewing settings with a first product targeting Metabolic Dysfunction-Associated Steatotic Liver Disease (MASLD). The result is liver visuals that strengthen diagnostic confidence and streamline MASLD evaluation.

A. Generic processing



B. MASLD-specific processing



A comparison between generic ultrasound image processing of the liver (A) and ContextVision MASLD-specific setting (B) in a mild steatosis case. In the MASLD setting, key anatomical structures such as the portal vein walls and diaphragm are clearly preserved. The intensity difference between the liver parenchyma and kidney is also optimized with improved contrast.

# **Delivering Value** Beyond Imaging

By enhancing image interpretation and workflow efficiency, ContextVision solutions deliver value across clinical, operational, and educational dimensions.

For more information or to reach out, please visit [www.contextvision.com](http://www.contextvision.com)

**Scan to see clinical  
images and discover our  
advanced technology**



ContextVision is a medical technology software company specialized in image analysis and artificial intelligence. As the global market leader within image enhancement, we are a trusted partner to leading manufacturers of ultrasound, X-ray and MRI equipment around the world. Our expertise is to develop powerful software products, based on proprietary technology and artificial intelligence for image-based applications. Our cutting-edge technology helps clinicians accurately interpret medical images, a crucial foundation for better diagnosis and treatment.

The company, established in 1983, is based in Sweden with local representation in the U.S., Japan, China and Korea.